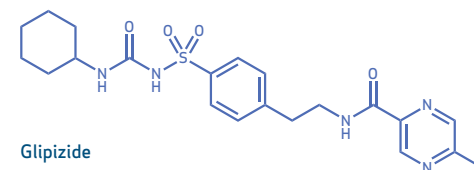
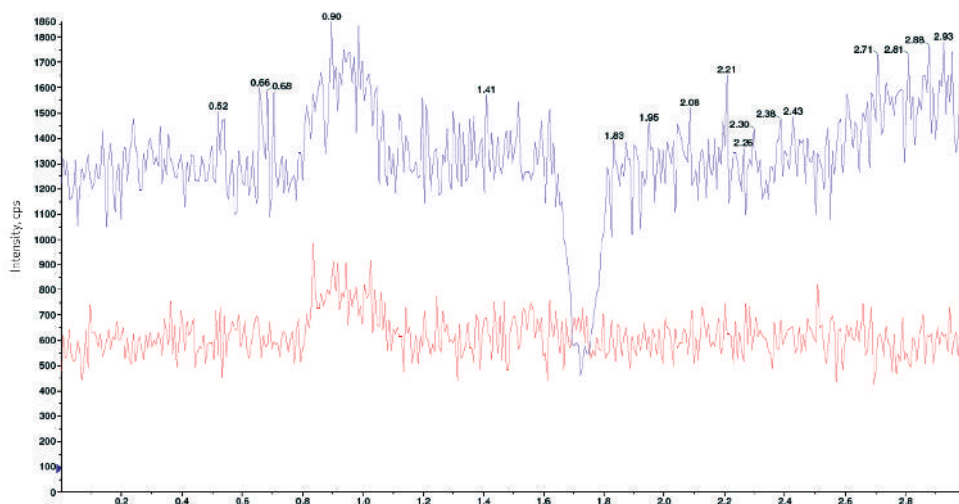


SiliaChrom® SB C18

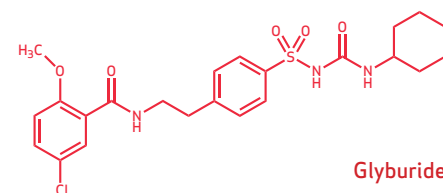
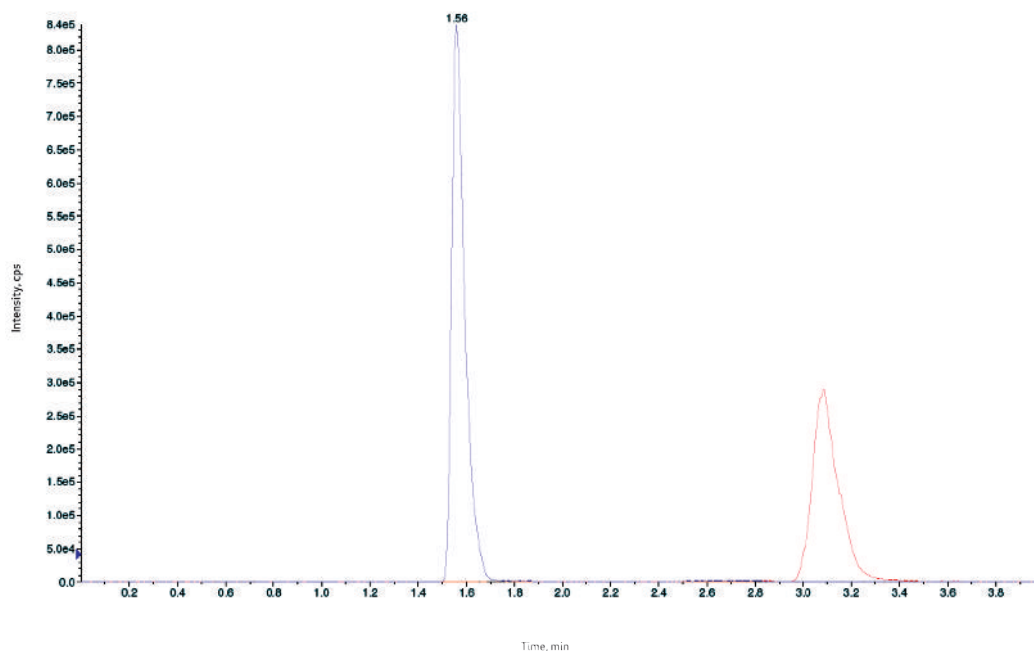
SILICYCLE Inc.
UltraPure **SILICA GELS**

High Performance Liquid Chromatography - Tandem Mass Spectrometry for Glipizide in Human Plasma

Blank Plasma



Glipizide and Glyburide in Human Plasma



Limit of Quantification:
The limit of quantification (LOQ) of glipizide was 1.23 ng/mL

Conditions

Mass System: API 4000 Q TRAP tandem mass spectrometer

Mass Condition: Multiple reaction monitoring (MRM) mode; electrospray ionization (ESI) in the positive ion mode; m/z 446.3→321.1 and 464.2→369.0 were used to quantify glipizide and glyburide respectively.

Column: SiliaChrom AQ C18, 5 μm

Column Size: 2.1 x 150 mm

Mobile Phase: 0.01M ammonium acetate solution containing 0.1% formic acid/acetonitrile (40/60, v/v)

Flow Rate: 0.4 mL/min

Temperature: 25°C

Injection volume: 5 μL

© Copyright 2010 SiliCycle Inc. All rights reserved. Subject to change without notice.