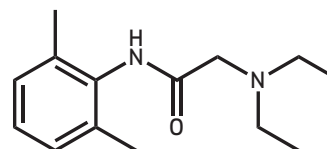
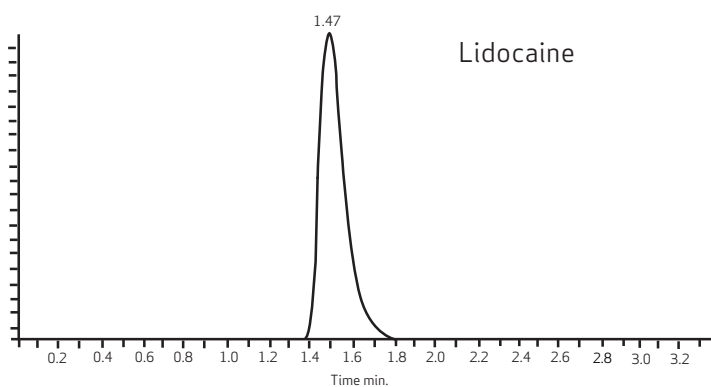
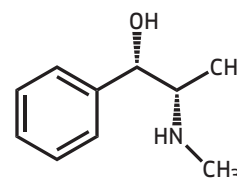
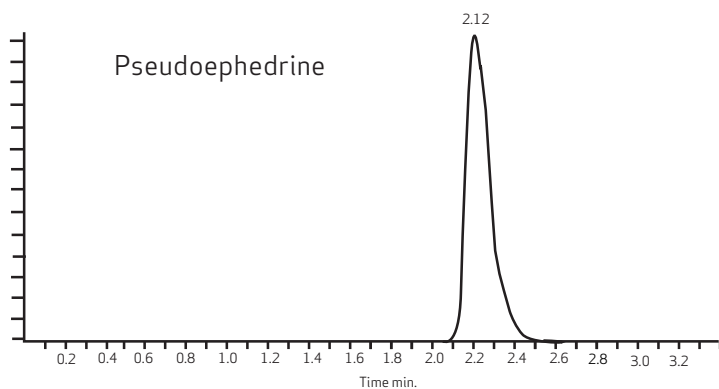


SiliaChrom® SB C18

SILICYCLE^{inc.}
UltraPure **SILICA GELS**

High Performance Liquid Chromatography - Tandem Mass Spectrometry for Pseudoephedrine in Plasma



Conditions

Mass System: API Qtrap 3200, Applied Biosystem

Mass Condition: Positive Ion Mode, MRM

Column: SiliaChrom SB C18, 5µm

Column Size: 2.1 x 50 mm

Mobile Phase: A: 1% Formic Acid in Water

B: Methanol Gradient: 20%B to 95%B in 2 min, hold for 0.5 min, then switch to A:B (20:80)

Flow Rate: 0.5 mL/min

Temperature: 25°C