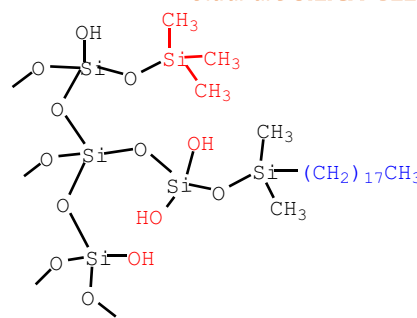


SiliaChrom® AQ C18 - Universal HPLC Column

SILICYCLE
UltraPure SILICA GELS

SiliaChrom AQ C18 columns use a new generation adsorbent based on high purity with 100 Å spherical silica and unique bonding technology. Particle size offering includes 3.0, 5.0 and 10 µm. **SiliaChrom AQ C18** columns exhibit excellent peak symmetry for any type of compounds (neutral, acidic and basic).

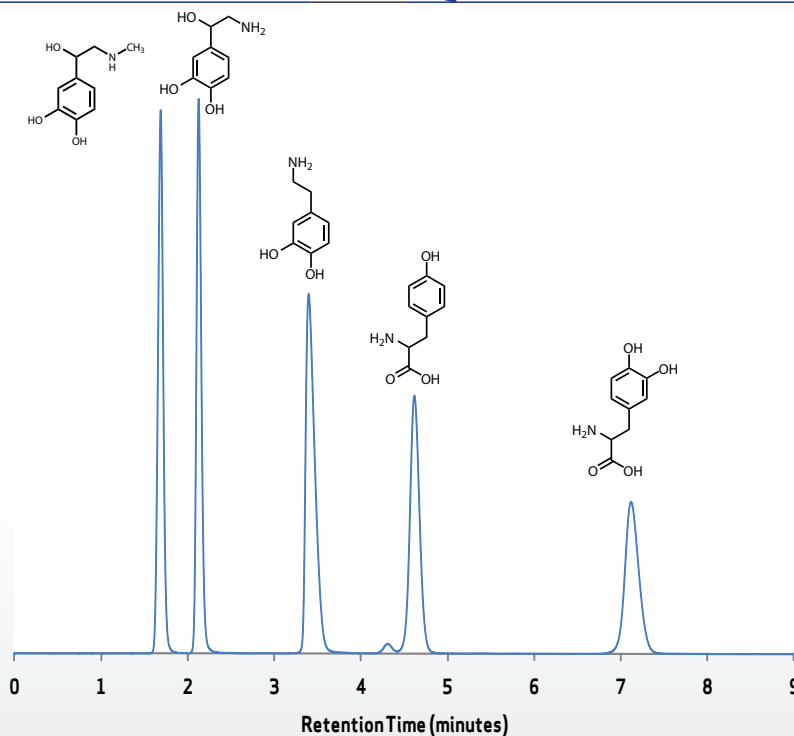
The **SiliaChrom AQ C18** adsorbent employs an optimum ratio of C18, partially endcapped with TMS, and polar surface groups (diol). The AQ is a universal HPLC column with pH 2-9, that is meant for everyday applications. This is achieved through a fine balance in the silanol-TMS-diol-C18/C8 functionality.



SiliaChrom AQ C18 Features

- Rapid equilibration
- Unique reversed-phase selectivity (universal HPLC column)
- Exceptional stability from pH 1.5 to 9
- Reduced need for mobile-phase modifiers
- Compatible with 100% aqueous mobile phase (buffer)
- Great column lifetime
- **Surface area:** 380 m²/g
- **Carbon load:** 18%
- **Endcapped:** Partially endcapped (unique proprietary)
- **USP L-code:** L1

Catecholamines with SiliaChrom AQ C18 - In Acidic Water as Mobile Phase



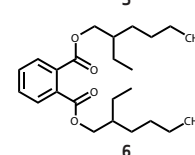
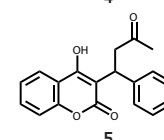
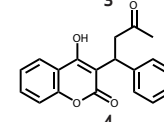
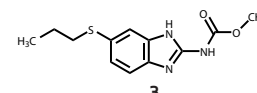
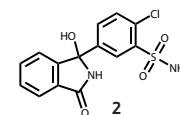
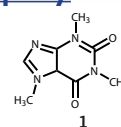
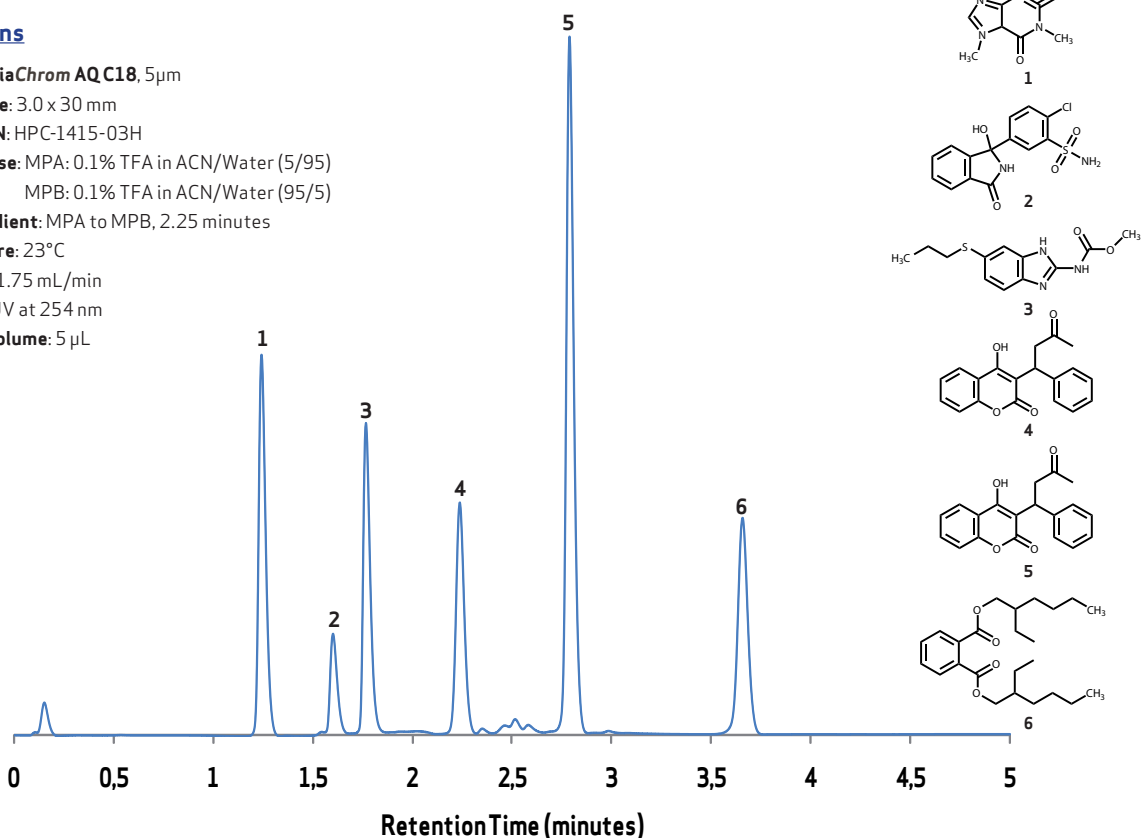
Conditions

Column: SiliaChrom AQ C18, 5µm
Column Size: 4.6 x 150 mm
SiliCycle PN: HPC-1405-15N
Mobile Phase: 1% Acetic Acid in Water
Temperature: 23°C
Flow Rate: 1.00 mL/min
Detector: UV at 265 nm
Injection Volume: 5 µL

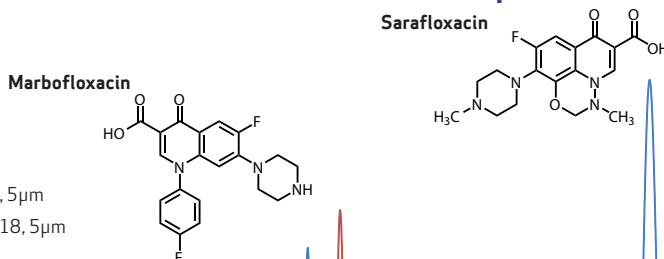
Rapid HPLC with SiliaChrom AQ C18 - Test Mix from Pharmaceutical Company

Conditions

Column: SiliaChrom AQ C18, 5µm
Column Size: 3.0 x 30 mm
SiliCycle PN: HPC-1415-03H
Mobile Phase: MPA: 0.1% TFA in ACN/Water (5/95)
 MPB: 0.1% TFA in ACN/Water (95/5)
Linear Gradient: MPA to MPB, 2.25 minutes
Temperature: 23°C
Flow Rate: 1.75 mL/min
Detector: UV at 254 nm
Injection Volume: 5 µL

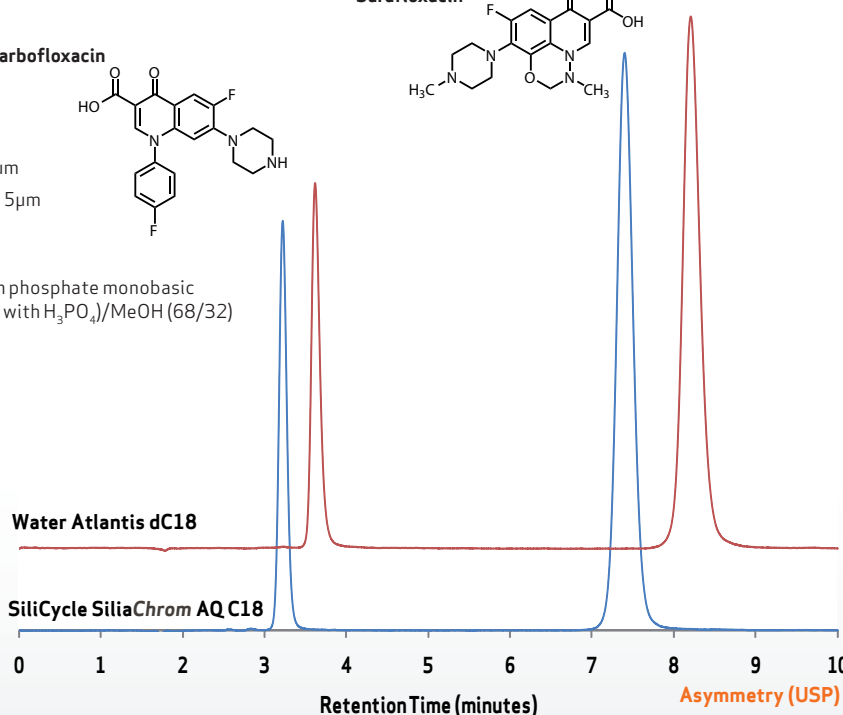


Peak Shape Evaluation for Acidic and Basics Fluoroquinolones



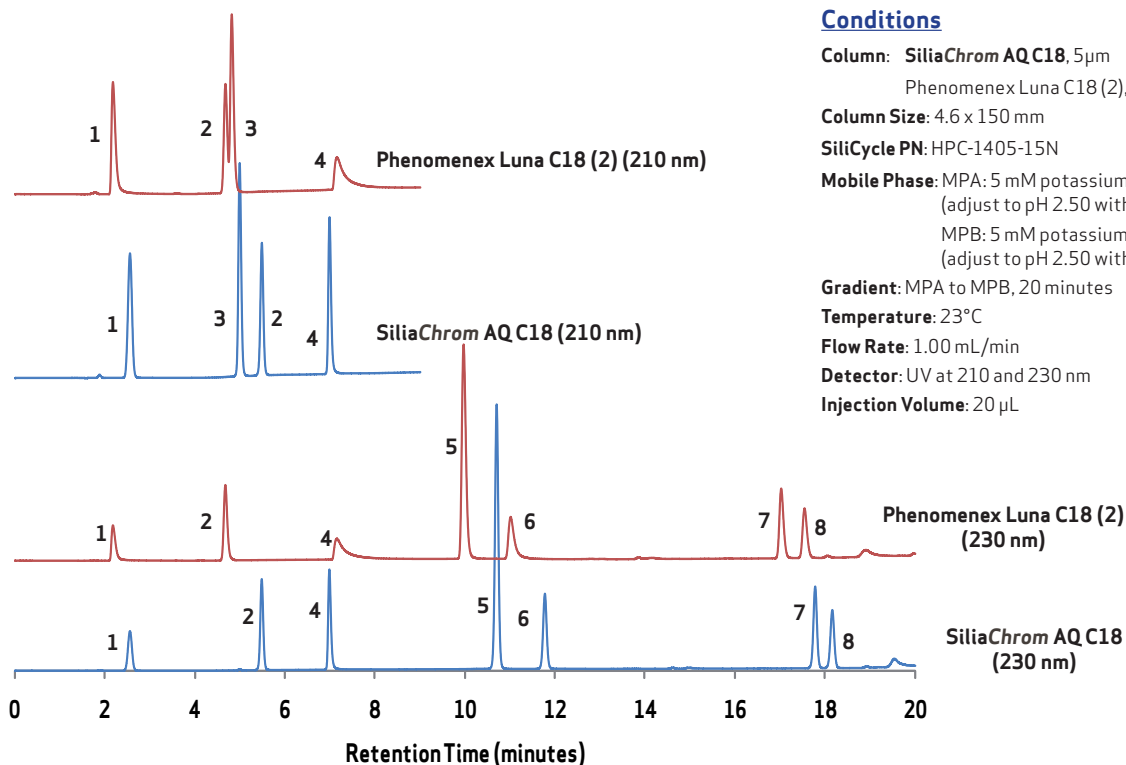
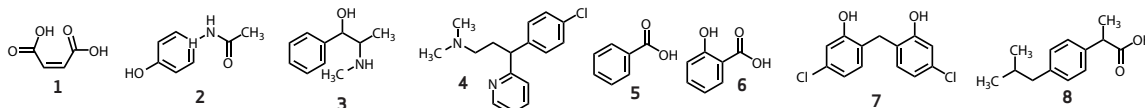
Conditions

Column: SiliaChrom AQ C18, 5µm
 Waters Atlantis dC18, 5µm
Column Size: 4.6 x 150 mm
SiliCycle PN: HPC-1405-15N
Mobile Phase: 2.5 mM potassium phosphate monobasic
 (adjust to pH 2.50 with H₃PO₄)/MeOH (68/32)
Temperature: 23°C
Flow Rate: 1.00 mL/min
Detector: UV at 275 nm
Injection Volume: 10 µL



Column	Water Atlantis dC18	SiliaChrom AQ C18
Asymmetry (USP)	1.29	1.12
	1.14	1.09

Evaluation of Resolution and Peak Shape



SiliaChrom Ordering Information

Column Size ID x Length (mm)	Product Number		Column Size ID x Length (mm)	Product Number
	3 μ m, 100 Å	5 μ m, 100 Å		
Analytical HPLC Columns			Semi-Preparative and Preparative Columns	
2.1 x 30	HPC-1407-03G	HPC-1412-03G	10 x 150	HPCSP-1429-15Q
2.1 x 50	HPC-1408-05G	HPC-1413-05G	10 x 250	HPCSP-1430-25Q
2.1 x 100	HPC-1409-10G	HPC-1414-10G	20 x 50	HPCSP-1431-05Y
2.1 x 150	HPC-1420-15G	HPC-1410-15G	20 x 150	HPCSP-1432-15Q
3.0 x 30	HPC-1421-03H	HPC-1415-03H	20 x 250	HPCSP-1433-25Q
3.0 x 50	HPC-1422-05H	HPC-1416-05H	30 x 100	HPCP-1434-10V
3.0 x 100	HPC-1423-10H	HPC-1417-10H	30 x 150	HPCP-1435-15V
3.0 x 150	HPC-1424-15H	HPC-1418-15H	30 x 250	HPCP-1436-25W
4.6 x 50	HPC-1401-05N	HPC-1419-05G	Guard Cartridges	
4.6 x 100	HPC-1402-10N	HPC-1404-10N	4.6 X 10	HPG-1400-01N
4.6 x 150	HPC-1403-15N	HPC-1405-15N	Guard Cartridges Holder	
4.6 x 200	-	HPC-1406-20N	4.6	AUT-0095
4.6 x 250	-	HPC-1411-25N		