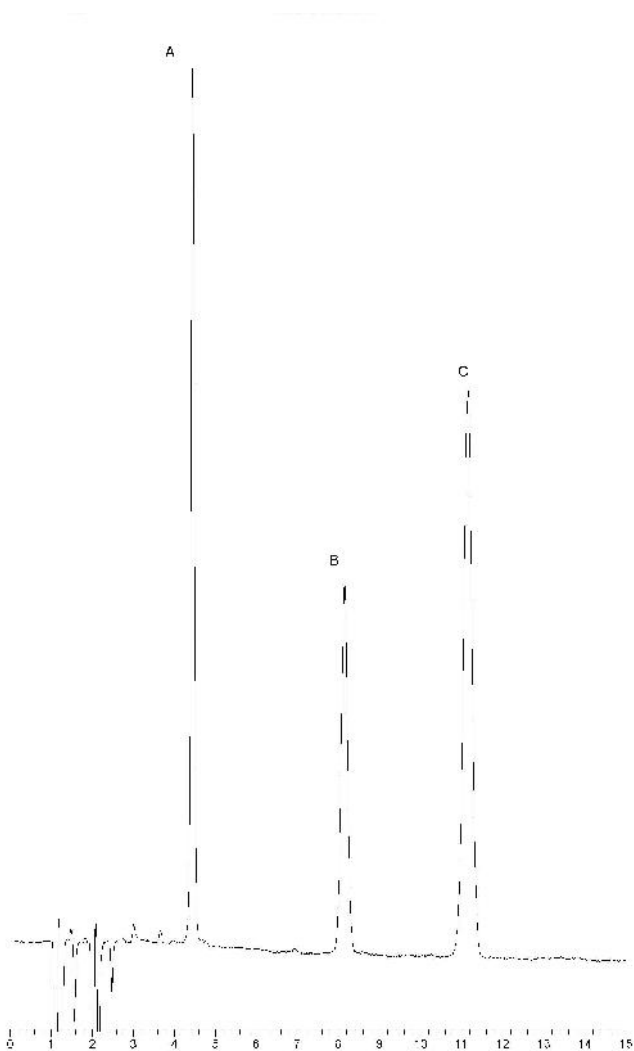
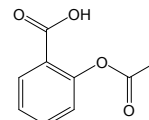


## SiliaChrom<sup>®</sup> dt C18

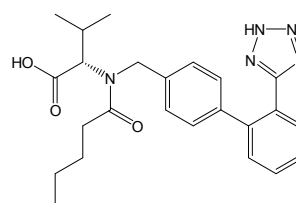
### Assay for QC Testing of Blood Pressure and Cholesterol Medication



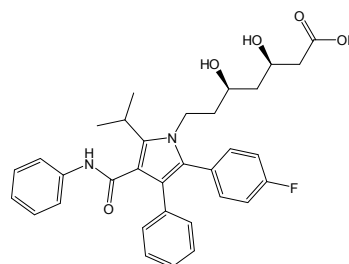
A: Aspirine



B: Valsartan



C: Atorvastatin



#### Conditions

**Column:** SiliaChrom dt C18, 5µm

**Column Size:** 4.6 x 150 mm

**Mobile Phase:** Methanol / H<sub>2</sub>O (70/30, 0.1% (v/v) Formic Acid)

**Temperature:** 30°C

**Flow Rate:** 0.8 mL/min

**Detector:** UV at 280nm

**Injection Volume:** 10µL